

QUICK CARD

DS3 Bit Error Rate Testing (BERT)





This quick card describes how to configure and run a DS3 Bit Error Rate Test to a hard loop, or another similarly configured VIAVI Test Instrument.

- OneAdvisor 1000 equipped with the following:
 - 100G Transport Module
 - BERT software release V30.1.0 or greater
 - C5DS3STS1 test option: DS3/STS-1 Electrical
 - C5DUALPORT test option
- Two (2) mini-BNC to BNC adapters (CB-MINITOBNCQTY1)
- One of the following DS3 cable sets to connect the T-BERD 5800 DS3 Port(s) to the line under test:
 - Two (2) BNC to BNC cables (CB-30662)
 - Two (2) BNC to WECO 440A cables (CB-015837)



Figure 1: Equipment Requirements

LAUNCH TEST

1. Press the Power button  to turn on the OneAdvisor.
2. Press the 100G Module **Test** icon  at the top of the screen.
3. Tap the Power button  and click  to launch the 100G Module.

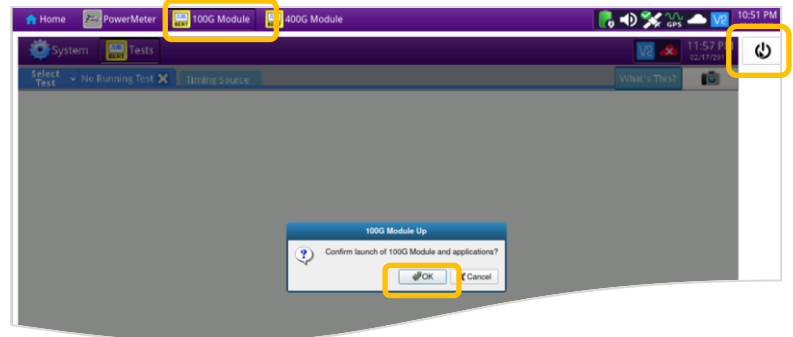


Figure 2: Launch 100G Module

4. Using the **Select Test** menu, Quick Launch menu, or Job Manager, launch the **DS1/DS3►DS3►DS3 BERT►Terminate** test.

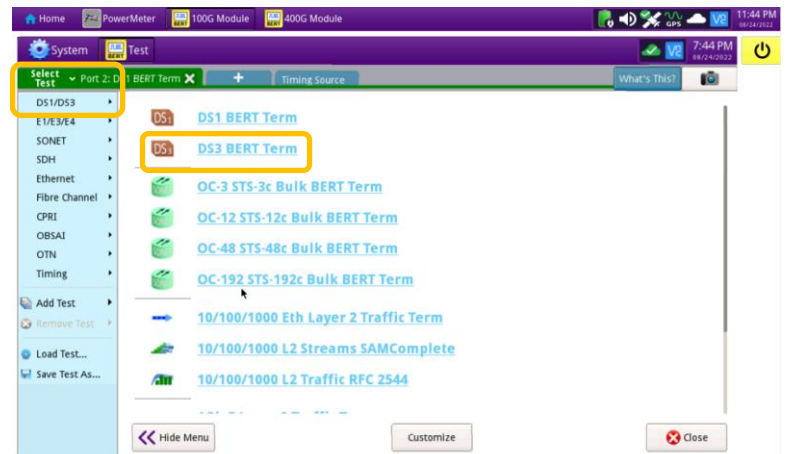


Figure 3: Launch Test

QUICK CARD

CONFIGURE TEST

- The following Information is needed to configure the test:
 - DS3 Framing (C-BIT or M13)
 - Clock Source (Internal or Recovered)
 - Test Patterns(s)
 - BER Pass/Fail Threshold



Figure 4: Work Order

- Tap to open the **Tools** Panel and select .
- Press to continue.
- Press the **Setup** soft key on the top right side of the screen.
- Select the indicated folders and configure your test as follows. Leave all other values at default, unless specified in the work order.

Folder	Option	Value(s)
Interface	Rx Input	Term
	Clock Source	If unknown, select "Internal"
	Clock Offset	0 ppm
	LBO	0 dB
Framing	Framing	If unknown, select "C-BIT"
Pattern	Pattern Mode	ANSI
	Pattern	2^23-1 ANSI

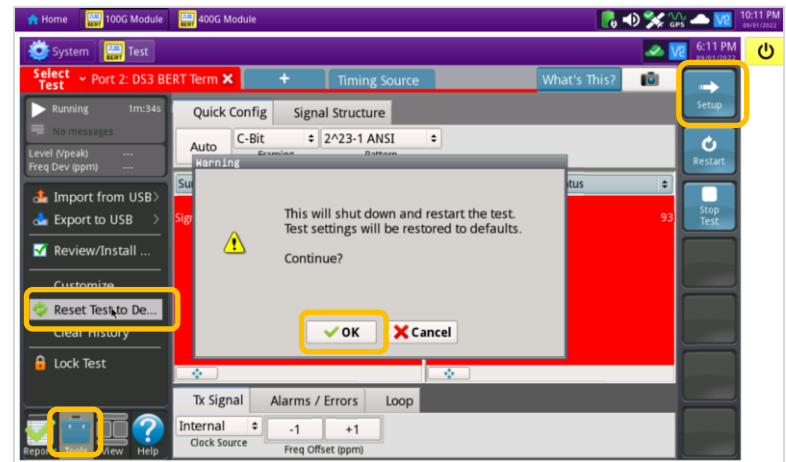


Figure 5: Reset Test to Defaults

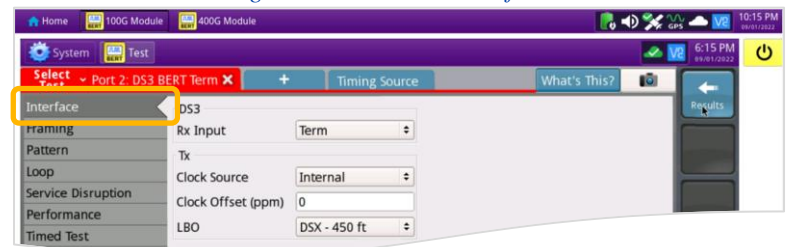


Figure 6: Setup, Interface

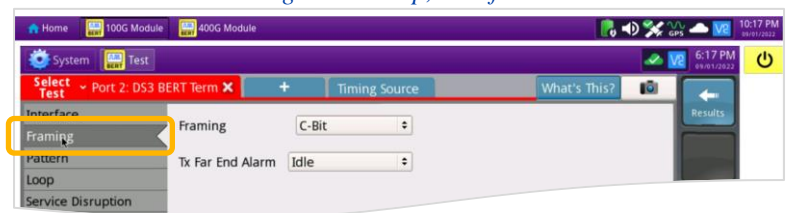


Figure 7: Setup, Framing

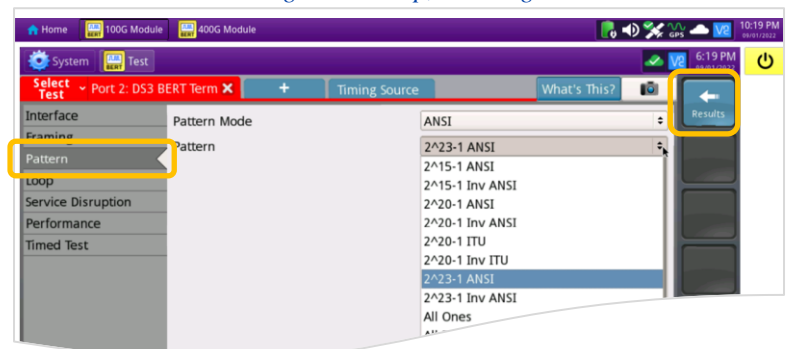


Figure 8: Setup, Pattern

- Press the **Results** soft key to view the Test Results screen.

QUICK CARD



CONNECT TO LINE UNDER TEST

- The OneAdvisor 100G Transport Module has mini-BNC ports for DS3 testing.
- CB-MINITOBNCQTY1 adapters are required to adapt to a standard BNC connector.
- You may use BNC to BNC or BNC to WECO cables to connect the adapter to the line under test.



Figure 9: Mini-BNC Connectors

RUN TEST

1. Using drop-down menus , select **"Interface/Signal"** for the right results display.
2. Press the **Restart** soft key .
3. Verify the following:
 - ▶ **Summary** LED is green.
 - ▶ **Signal Present** LED is green. If the LED is red, check your cables. Tx and Rx may be reversed.
 - ▶ **Frame Sync** LED is green.
 - ▶ **RX Frequency (Hz)** = 44736000 +/- 895 Hz.

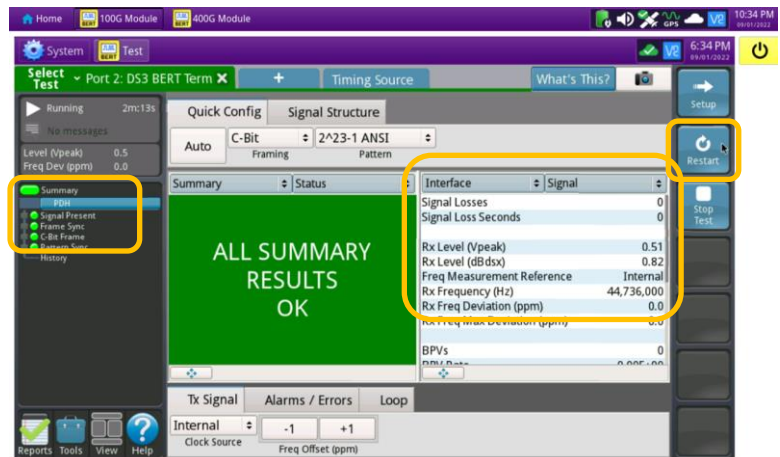



Figure 10: Results, Interface/Signal

4. Using drop-down menus , select **"Payload/BERT"** for the right results display.
5. Allow the test to run for desired duration and verify the following:
 - ▶ **Pattern Sync** LED is green.
 - ▶ **Bit/TSE Error Rate** result does not exceed your required threshold. (0.00E+00 if pass/fail threshold unknown)

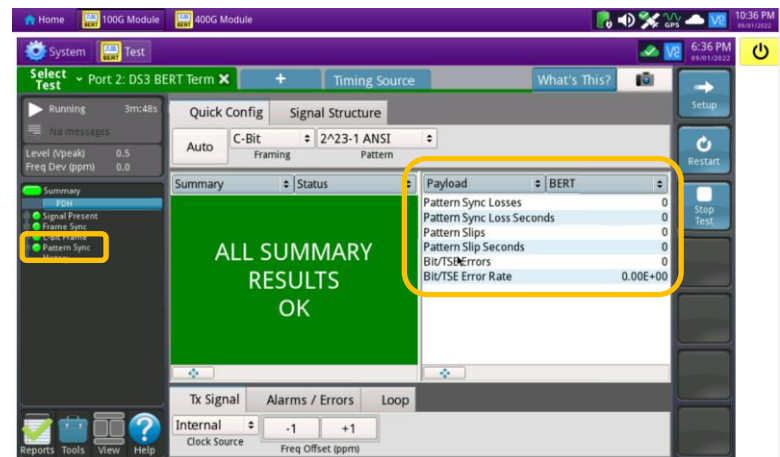



Figure 11: Results, Payload BERT

QUICK CARD

- In the OneAdvisor's **Quick Config** menu, change "**Pattern**" to the next value in the test plan.
- Press the Restart soft key  to reset results.
- Allow test to run for desired duration and verify the following:
 - ▶ **Pattern Sync** LED is green.
 - ▶ **Bit/TSE Error Rate** does not exceed your required threshold. (0.00E+00 if pass/fail threshold unknown)
- Repeat steps 6 through 8 for all **Patterns** in the test plan. Patterns may include:
 - ▶ **Delay**: Measures Round Trip Delay (RTD) instead of Bit Errors (RTD values are shown instead of BER in the "**Payload/BERT**" results display)
 - ▶ Others

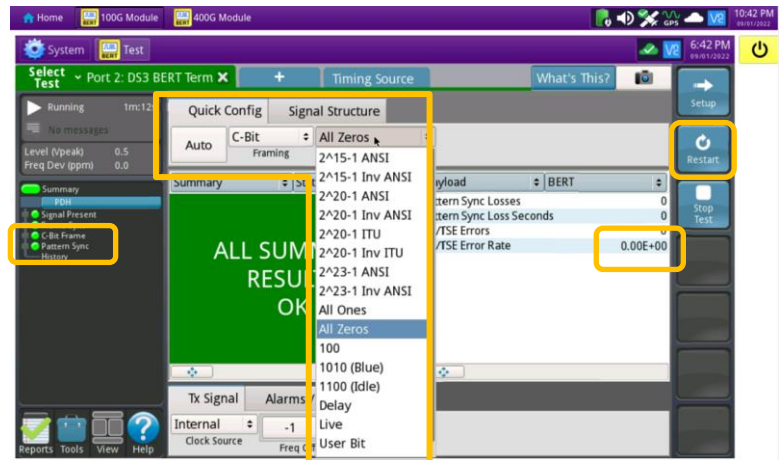


Figure 12: Results, Quick Config

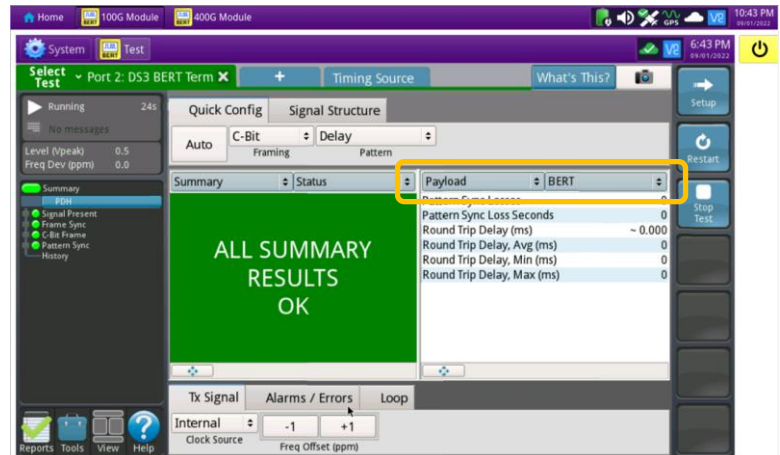

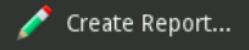



Figure 13: Results, Delay

CREATE REPORT

- Tap  to open the **Reports** Panel and select .
- Tap .
- A report will be saved to the OneAdvisor 1000 100G Module's **/bert/reports** folder.

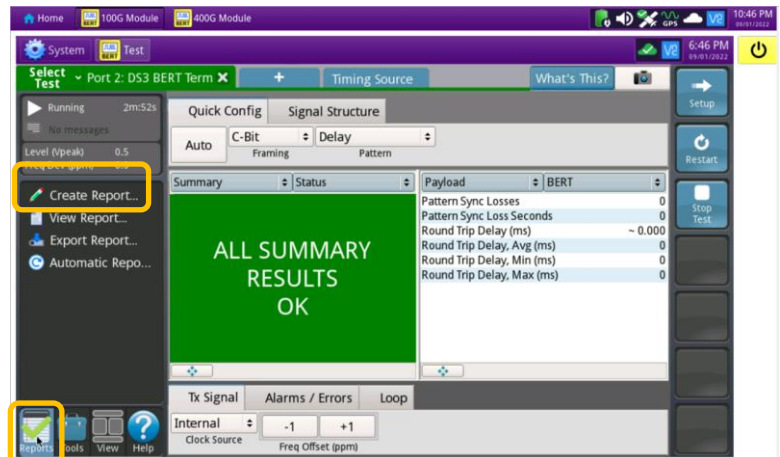


Figure 14: Create Report